

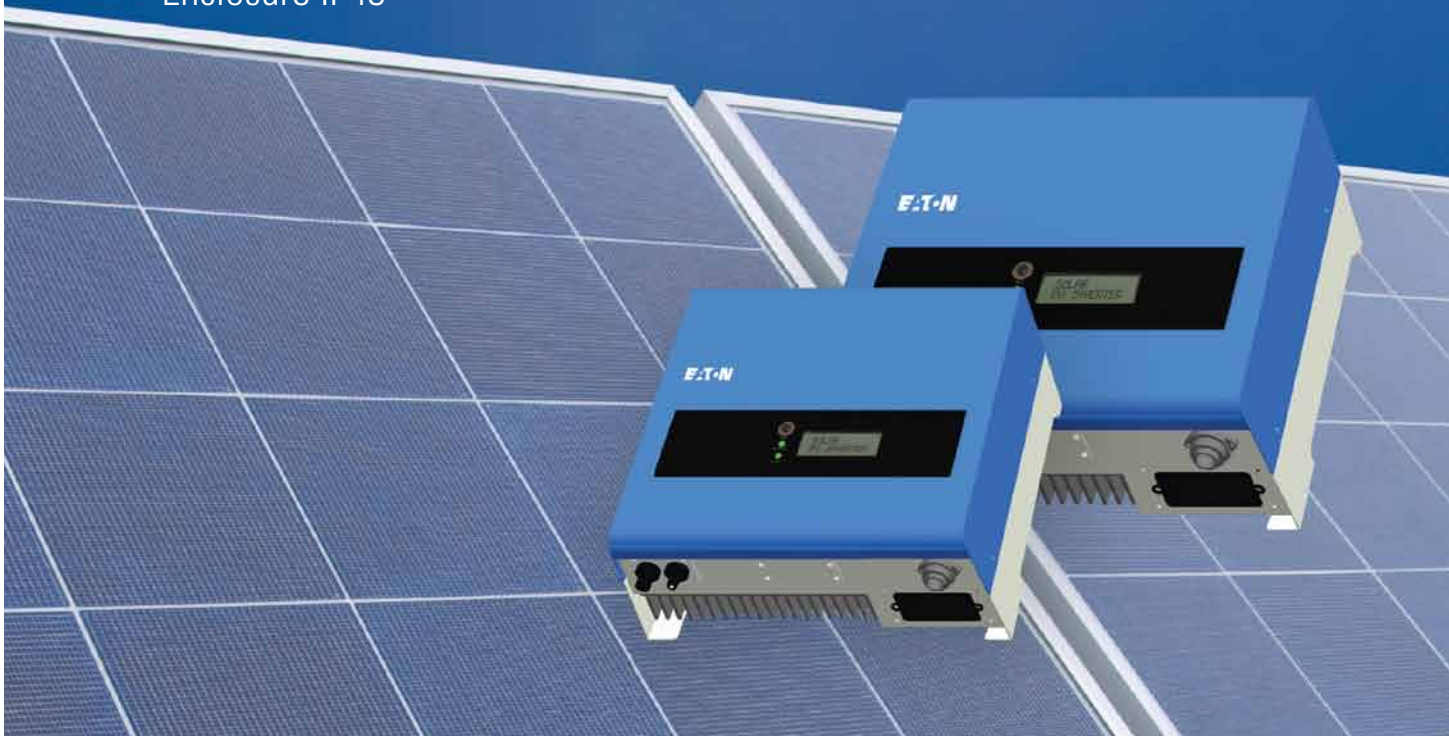
PV Grid Connect Inverters

Features:

- Transformer-free design
- Lead free (ROHS)
- High conversion efficiency
- >99% MPPT efficiency
- Plug and play
- Single MPP tracker
- Single-phase
- Compact, fan-free design
- RS-485 communications port
- Complies with Australian Standards
- Enclosure IP43

OEM and ODM capability:

Our customers have the option and flexibility of either custom branding or designing solar inverters to their required specifications. Eaton has the resources and engineering expertise to guide you through the OEM and ODM processes.



EATON

Powering Business Worldwide



PV Grid Connect Inverters

1kW Inverter Electrical Specification

Input (DC)

- Single MPP tracker
- Nominal DC voltage 360V DC
- Maximum PV open voltage 500V DC
- MPPT voltage range 250 ~ 450V DC
- MPPT efficiency at output > 99%
- System start-up voltage 100V DC
- Working voltage range 100 ~ 500 V DC
- Initial feeding voltage 150V DC
- Full rating range 250 ~ 450V DC
- Max. input current 5A DC
- Shutdown voltage 70V DC typical
- DC voltage ripple < 10%
- DC insulation resistance > 5M Ω

Output (AC)

- Nominal output power 1000W
- Maximum output power 1100W
- Nominal voltage 230V AC, single phase
- Regulation voltage range 200 ~ 270V AC
- Operational voltage range 206~264V AC
- Voltage range for full power 210 ~ 260V AC
- Regulation frequency range 45 ~ 55Hz for 50Hz, 59.3~60.5 Hz for 60Hz (User selectable)
- Operational frequency range 49.25~50.75Hz for 50Hz 59.31~60.49 Hz for 60Hz (User selectable)
- Frequency setting range 45 ~ 55 Hz
- Nominal output current 4.4A AC (RMS)
- Maximum output current 5.5A AC (RMS)
- DC injection <20mA DC
- O/P current distortion at full rating <3%
- Power Factor at full rating > 0.99
- Active anti-islanding - Yes, active frequency deviation

2kW Inverter Electrical Specification

Input (DC)

- Single MPP tracker
- Nominal DC voltage 360V DC
- Maximum PV open voltage 500V DC
- MPPT voltage range 250 ~ 450V DC
- MPPT efficiency at output > 99%
- System start-up voltage 100V DC
- Working voltage range 100 ~ 500V DC
- Initial feeding voltage 150V DC
- Full rating range 250 ~ 450V DC
- Max. input current 10A DC
- Shutdown voltage 70V DC typical
- DC voltage ripple < 10%
- DC insulation resistance > 5M Ω

Output (AC)

- Nominal output power 2000W
- Maximum output power 2200W
- Nominal voltage 230V AC, single phase
- Regulation voltage range 200 ~ 270V AC
- Operational voltage range 206 ~ 264V AC
- Voltage range for full power 210 ~ 260V AC
- Regulation frequency range 45 ~ 55Hz for 50Hz, 59.3~60.5 Hz for 60Hz (User selectable)
- Operational frequency range 49.25~50.75Hz for 50Hz, 59.31~60.49Hz for 60Hz (User selectable)
- Frequency setting range 45 ~ 55 Hz
- Nominal output current 8.7A AC (RMS)
- Maximum output current 11A AC (RMS)
- DC injection <40mA DC
- O/P current distortion at full rating <3%
- Power Factor at full rating >0.99
- Active anti-islanding -Yes, active frequency deviation